

Life IN Light

**MEGAMAN®**

# 2010/11 **NEW** PRODUCTS



# MEGAMAN® LED

## True replacement for halogen lamps



MEGAMAN® is a global brand in energy-saving lighting. Now, MEGAMAN® is leading the way with its state-of-the-art LED lamps.

Early this year, we have launched LED MR16 reflectors, LED CANDLE and LED CLASSIC, all of which resemble point-source lighting effects of traditional light sources.

Now, we are delighted to introduce the LED CROWN SILVER and LED GX53 to further enhance our LED product range.

### LED reflectors achieve high light output and lumen maintenance with TCH™ technology

MEGAMAN® LED reflectors maximise lighting performance with the uniquely designed aluminium reflector and the use of patented Thermal Conductive Highway™ (TCH) technology, which offers superb heat dissipation.

Most of our lamps are designed to resemble the outlook of halogens, which make our lamps look familiar to consumers, and more importantly, ease retrofit.

The TCH™ technology also enables our creation of higher wattage LED lamps, such as our 14W AR111 and 20W PAR38, in a size that is comparable to the halogen or incandescent lamp being replaced, while offering excellent light output.



# LED PROFESSIONAL Series

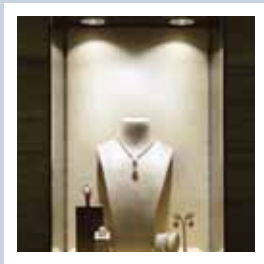


## LED REFLECTOR

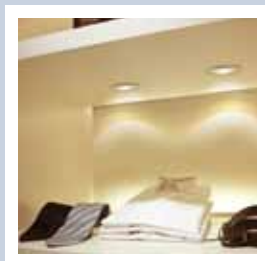
- New member to the MEGAMAN® LED MR16 REFLECTOR: 24° Flood option for 10W
- Powerful luminous intensity of 2,800cd to replace 50W halogen MR16
- 1-100% dimming is capable when working with DC1-10V dimming electronic driver and DC1-10V dimmer



Works with DC1-10V dimmer



- 6W LED MR16 REFLECTOR has a similar size of an equivalent halogen MR16
- Delivers supreme light output up to 1,300cd to replace 35W halogen MR16
- Works with most conventional AC/DC 12V halogen transformers



- Integral LED cabinet lighting with GX53 lamp base
- Ultimate slim profile that allows a wide range of applications

MR16 REFLECTOR

10W



Specifications\*:

Model no.	<b>ER0510-50H24D</b>
Voltage (V)	DC 20V
Luminous intensity (cd)	2,800
Beam angle (°)	24
Colour temp.	2800K [Ra82] / 4000K [Ra85]
Lamp life (hrs)	30,000
Lamp base	GU5.3
Dimension (D x L) (mm)	50 x 82
Driver	MEGAMAN® LD0110x1V-C460

MR16 REFLECTOR

6W



Specifications\*:

Model no.	<b>ER1006-35H24D</b>	<b>ER1006-35H36D</b>
Voltage (V)	AC/DC 12V	
Luminous intensity (cd)	1,300	850
Beam angle (°)	24	36
Colour temp.	2800K [Ra82] / 4000K [Ra85]	
Lamp life (hrs)	25,000	
Lamp base	GU5.3	
Dimension (D x L) (mm)	50 x 60	
Transformer	AC/DV12V halogen transformers	

GX53 REFLECTOR

5W



Specifications\*:

Model no.	<b>LR1305-30D</b>
Voltage (V)	220 - 240
Luminous intensity (cd)	850
Beam angle (°)	30
Colour temp.	2800K [Ra82] / 4000K [Ra85]
Lamp life (hrs)	30,000
Lamp base	GX53
Dimension (D x L) (mm)	75 x 25

**MEGAMAN®**

31/F, Two Landmark East, 100 How Ming Street,  
Kwun Tong, Kowloon, Hong Kong

Tel: (852) 2305 1722  
Fax: (852) 2758 5957  
Email: [info@megaman.cc](mailto:info@megaman.cc)

[www.megaman.cc](http://www.megaman.cc)

© Copyright 2010. All rights reserved by MEGAMAN®

 **Mixed Sources**  
Product group from well-managed  
forests, and other controlled sources  
[www.fsc.org](http://www.fsc.org) Cert no. SGS-COC-003329  
© 1996 Forest Stewardship Council

# Striving for the best with state-of-the-art technology



**MEGAMAN® is determined to set new benchmarks for the lighting industry.**

MEGAMAN® never stops introducing innovative products with advanced and unique features that bring the lighting industry to new horizons.



Amalgam Technology  
No Mercury Hazard

## ALL MEGAMAN® CFLs employ true amalgam technology

MEGAMAN® cares for the environment. We do all we can to increase consumer safety and reduce pollution. From January 2008, all our CFLs employ true amalgam technology that they are completely free of liquid mercury. This provides a safer and eco-friendlier alternative to liquid mercury.

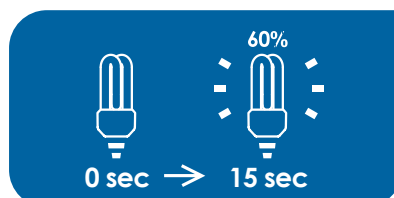
### Amalgam CFLs can:

- Prevent the release of toxic mercury during the manufacturing process
- Prevent mercury leakage even if the lamp cracks
- Ease the clean-up procedure: just sweep the lamp debris up like broken glass
- Facilitate mercury and lamp material recycling and reduce landfill burden
- Allow creation of more compact lamps with excellent lumen maintenance



## Fast Warm Up technology

The Fast Warm Up technology enables our lamps to reach 60% of full brightness within a fast 15 seconds<sup>^</sup>. This is impressive for CFLs made with amalgam, which generally require a longer warm up time. Such outstanding performance makes our lamps not only compliant with, but warm up 8 times faster than required by the ErP Directive.



<sup>^</sup> Availability of upgraded warm up time is subject to lamp model

# LED SMART Series

## LED REFLECTOR



Specifications\*:

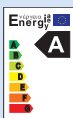
Model no.	LR1203-FL	ER0603-FL
Voltage (V)	220 - 240	AC/DC 12V
Luminous intensity (cd)	500	
Beam angle (°)	20	
Colour temp.	2800K [Ra85] / 4000K [Ra88]	
Lamp life (hrs)	20,000	30,000
Lamp base	GU10	GU5.3
Dimension (D x L) (mm)	50 x 55	50 x 45
Transformer	N/A	AC/DV 12V halogen transformers

## LED CANDLE

- Resembles the point-source of incandescent candle and creates incredible sparkling lighting effect
- Various glass-finishing options are available to cater for different applications



Specifications\*:



Model no.	LC0104CS	LC0104CT	LC0103.5CS/SE	LC0103.5CT/GD
Voltage (V)	220 - 240			
Light output (lm)	127		117	
Colour temp.	2700K [Ra85] / 4000K [Ra88]			2500K [Ra85]
Lamp life (hrs)	30,000			
Lamp base	E14 / E27			
Dimension (D x L) (mm)	37 x 99	37 x 102	37 x 99	37 x 102

Description of model no. suffix:  
 CS = Smooth glass  
 CT = Twisted glass  
 CS/SE = Smooth glass with silicone protection  
 CT/GD = Twisted glass with golden cover



Specifications\*:

Model no.	LC0203CS	LC0203CT	LC0203CS/SE
Voltage (V)	220 - 240		
Light output (lm)	82		75
Colour temp.	2700K [Ra85] / 4000K [Ra88]		
Lamp life (hrs)	30,000		
Lamp base	E14 / E27		
Dimension (D x L) (mm)	37 x 99	37 x 102	37 x 99

# Compact Fluorescent Lamp Series



## SPIRAX

- High performance light output: 70 lm/W for 23W version; 59 lm/W to 66 lm/W for lower wattage versions
- Good lumen maintenance:  $\geq 76\%$  at 10,000 hours, while ErP Directive for non-directional household lamp is requiring  $\geq 70\%$  at 6,000 hours in Stage 5
- Two lamp life options: 1) 15,000 hours lifetime by *INGENIUM*<sup>®</sup> technology  
2) 10,000 hours lifetime



Specifications\*:

Model no. <sup>†</sup>	SP0307i	SP0311i	SP0314i	SP0318i	SP0323i
Voltage (V)	220 - 240				
Light output (lm)	420	650	860	1,200	1,600
Colour temp. (K)	2700				
Lamp life (hrs)	10,000 <sup>†</sup> / 15,000				
Lamp base	E14 / E27		E27		
Dimension (D x L) (mm)	42 x 92 / 42 x 86	42 x 99 / 42 x 93	55 x 102	55 x 111	55 x 117

## SLIM

- Slender lamp profile with extremely compact in size is perfect for narrow fittings, decorative luminaires and wall lamps
- Available in 3P-tube and full spiral shape



SPIRAX  
SLIM

3P  
SLIM



Specifications\*:

Model no. <sup>†</sup>	SP0405i	SP0408i	SP0411i	3P505	3P508	3P511
Voltage (V)	220 - 240					
Light output (lm)	270	450	570	270	450	570
Colour temp. (K)	2700					
Lamp life (hrs)	10,000 <sup>†</sup> / 15,000			10,000		
Lamp base	GU10 / E14 / E27			GU10 / E14 / E27		
Dimension (D x L) (mm)	32 x 83 / 32 x 89 / 32 x 85	32 x 93 / 32 x 99 / 32 x 95	32 x 103 / 32 x 109 / 32 x 105	32 x 87 / 32 x 94 / 32 x 89	32 x 97 / 32 x 104 / 32 x 99	32 x 107 / 32 x 114 / 32 x 109

## GU10 REFLECTOR

- Budget version of 11W CFL GU10 Reflector that truly delivers 11W light output
- Patented PowerLens™ technology enables high luminous intensity with more concentrated light cone
- Narrowed beam angle: 90°
- Conforms to the definition of directional lamp in ErP Directive

POWERLENS™  
TECHNOLOGY

11W



Specifications\*:

Model no.	BR2911
Voltage (V)	220 - 240
Luminous intensity (cd)	97
Beam angle (°)	90
Colour temp. (K)	2700
Lamp life (hrs)	8,000
Lamp base	GU10
Dimension (D x L) (mm)	50 x 74



## LED CROWN SILVER

7W



Specifications\*:

Model no.	<b>LS0107</b>
Voltage (V)	220 - 240
Colour temp.	2700K [Ra85] / 4000K [Ra92]
Lamp life (hrs)	30,000
Lamp base	E27
Dimension (D x L) (mm)	60 x 106

- Unique silver-plated design in A60 shape lamp with a silvered crown top and clear lamp bulb finishing
- Best for mirror lighting and decorative lighting
- Offers well-controlled light source and non-glare lighting

## LED CLASSIC

- Best fitted in luminaires decorated with crystals to create glittering effects with an attractive spectrum
- Glass-finishing options of smooth glass with and without silicone protection are available to cater for different applications

5W



5W



4W



3.5W



Specifications\*:



Model no.	<b>LG0105CS</b>	<b>LG0105CS/SE</b>	<b>LG0104CS</b>	<b>LG0103.5CS/SE</b>
Voltage (V)	220 - 240			
Light output (lm)	220	210	127	117
Colour temp.	2700K [Ra80] / 4000K [Ra80]		2700K [Ra85] / 4000K [Ra88]	
Lamp life (hrs)	30,000			
Lamp base	E14 / E27			
Dimension (D x L) (mm)	45 x 88			

Description of model no. suffix:

CS = Smooth glass

CS/SE = Smooth glass with silicone protection

3W



3W



Specifications\*:

Model no.	<b>LG0203CS</b>	<b>LG0203CS/SE</b>
Voltage (V)	220 - 240	
Light output (lm)	82	75
Colour temp.	2700K [Ra85] / 4000K [Ra88]	
Lamp life (hrs)	30,000	
Lamp base	E14 / E27	
Dimension (D x L) (mm)	45 x 88	

